

Uroflowmetry

Cystometry

Electromyography

Pressure-Flow Studies

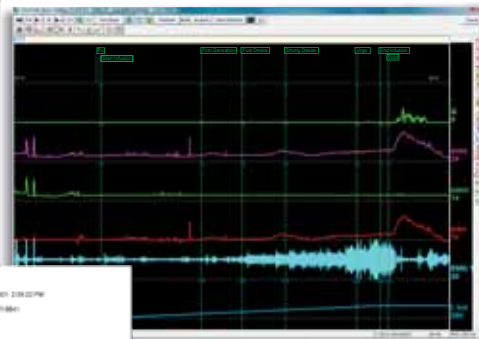
Urethral Pressure Profilometry

Leak Point Pressure Tests

Specifically designed for large teaching and research hospitals, **Urolab® Janus® 6** offers convenience, ease of use, and the most advanced software functionality, allowing for significant post-study editing and analyses.

This intuitive software is loaded with features that can be customized to meet the complex needs of such facilities. To name a few...

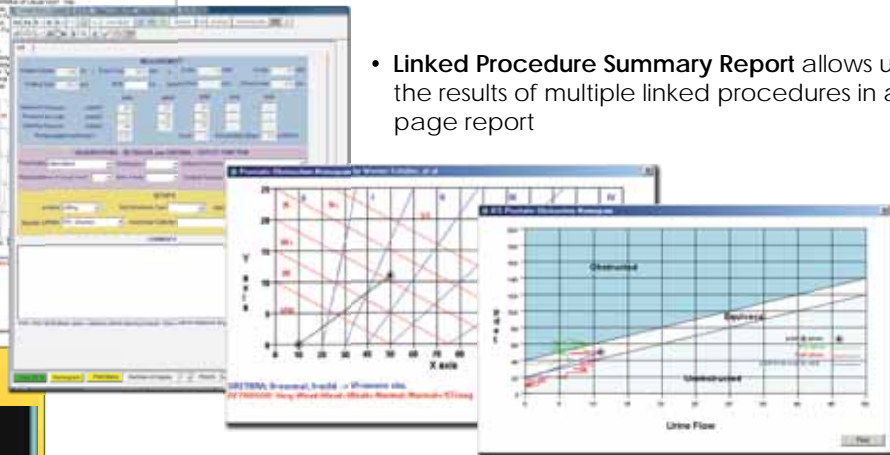
- User auto-setup allows **personalized automation** of all procedure steps for acquisition, analysis and report generation
- Procedure configurations can be **linked as macros** in order to save time in busy labs
- **Automatic analysis** enables users to choose whether to complete analysis during or after the study



- **Artifact recognition and removal** provides capability to manually or automatically delete artifacts from procedure waveforms – Ideally suited for use in pediatric urodynamics
- **Automatic cough detection/removal** allows easy clean up of studies – Especially useful in the preparation of images for clinical presentations and publications

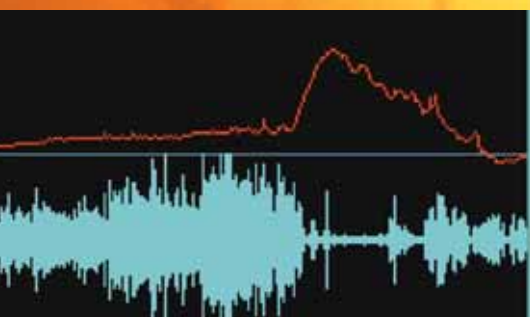
- **Slide Capture and File Storage** allows waveform screens, with or without video images, to be saved as files for export to documents, PowerPoint®, or other slide or image-processing programs

- **Linked Procedure Summary Report** allows users to print the results of multiple linked procedures in a single page report






- **System Networking:** Options are available for locations that require remote review, data input or interface with a patient information system

- Remote Access and Review
- Centralized Database
- DICOM Ready



Space-Saving Hardware Design paired with Proven Technology

Urolab Janus 6 electronic and mechanical components are durable, ensuring years of trouble-free operation. In addition, the modular hardware and software guarantee ease of service and future upgrades.

Desktop	All-In-One	Notebook
22" W x 25" D x 34" H	22" W X 26" D x 28 to 40" H	22" W X 22" D x 30 to 40" H
<ul style="list-style-type: none"> • Robust design • Desktop PC • Extra space for accessories • Adjustable keyboard height • Tall 40" version available 	<ul style="list-style-type: none"> • Mobile design • Touchscreen All-in-One PC • Electronic height-adjustable pressures and keyboard • Wireless printer 	<ul style="list-style-type: none"> • Transportable design • Adjustable height • Notebook PC • Wireless printer • Collapsible base version available • Custom carry cases available 

Additional Features:

- 12+ channels to display all clinically relevant data
- 4 direct pressures, expandable to 8
- Infused volume shown as a waveform for trending analysis
- Unlimited ICS standard and user-defined event markers
- Extensive selection of predictive nomograms and validated clinical surveys
- Customizable urodynamic and consultation reports
- Auto-calibration technology for instantaneous change between water, air-charged or solid-state technologies
- Editable MS Word® report templates (used with optional MS Word software)
- Expanded patient demographics and clinical database
- Bladder and intake diary interpretive software
- Windows Vista® Business or XP® Pro operating system
- Backed by Life-Tech's 100% Uptime Guarantee and legendary 24/7 technical service

Optional Features:

- Water, air-charged or solid-state catheters
- 1 or 2 uroflows
- 1 or 2 EMG channels, with or without audio
- UroPump
- Urethral pressure profilometer
- Wireless remote control (shown)
- Reports in image formats (pdf, jpeg, tif and more)
- Galen® clinical database
- AutoRead® scanned data input
- Voice dictation
- meridianEMR interface
- Video urodynamics
- Pelvic muscle rehabilitation
- Anorectal manometry
- Online technical service
- Cavernosometry
- DICOM PacsPrinter™



Life-Tech, Inc.

Life-Tech International, Inc

Stafford, Texas, USA
 281-491-6600 800-231-9841
 FAX: 281-491-7197
 urosales@life-tech.com
 www.life-tech.com

