

Uroflowmetry

Cystometry

Electromyography

Pressure-Flow Studies

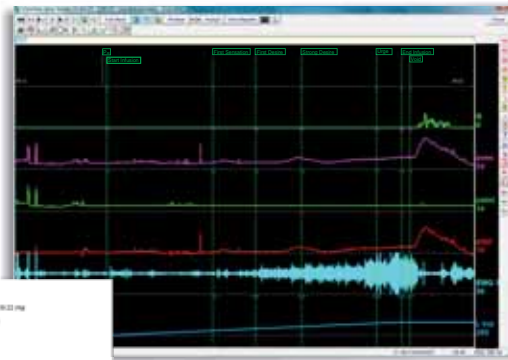
Urethral Pressure Profilometry

Leak Point Pressure Tests

Specifically designed for general and specialized hospitals as well as large clinics, **Urolab® Primus® 6** offers convenience, ease of use, and advanced software functionality, allowing for significant post-study editing and analyses.

*This intuitive software is loaded with features that can be customized to meet the complex needs of such facilities. To name a few...*

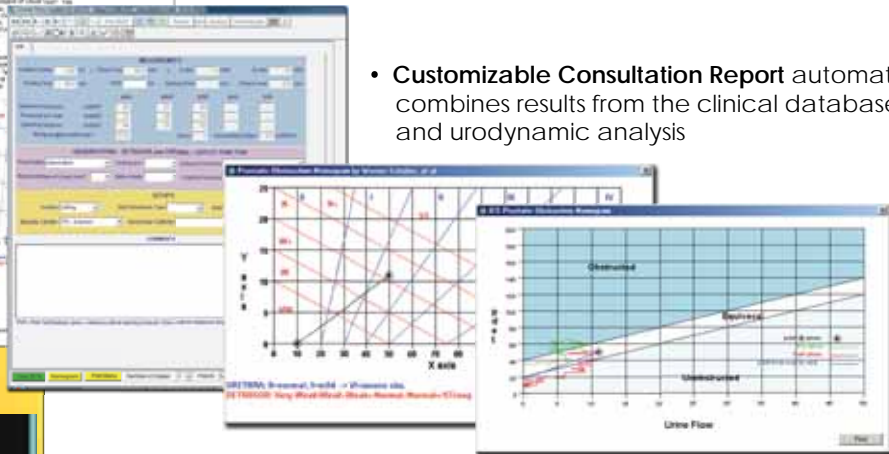
- **Expanded patient demographic information and clinical database** enables users to conduct statistical analyses
- **Customizable study setups and urodynamic reports** are easily tailored to your facility's standards
- Exclusive **auto-calibration** technology makes changing from water to air-charged or solid-state catheters instantaneous



- ICS-standardized **compliance calculation** (ml/H2O) at any data point on the waveform enhances observation of detrusor function during filling
- **Scrollbar during acquisition** to review historical data and edit events while simultaneously monitoring current study data

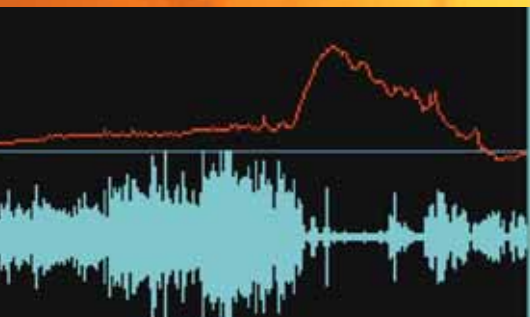
- Extensive selection of **predictive nomograms** and validated clinical surveys allows comparison against international evaluation standards

- **Customizable Consultation Report** automatically combines results from the clinical database and urodynamic analysis






- **System Networking:** Options are available for locations that require remote review, data input or interface with a patient information system

- **Remote Access and Review**
- **Centralized Database**
- **DICOM Ready**



## Space-Saving Hardware Design paired with Proven Technology

Urolab Primus 6 electronic and mechanical components are durable, ensuring years of trouble-free operation. In addition, the modular hardware and software guarantee ease of service and future upgrades.

Desktop	All-In-One	Notebook
22" W x 25" D x 34" H	22" W X 26" D x 28 to 40" H	22" W X 22" D x 30 to 40" H
<ul style="list-style-type: none"> <li>• Robust design</li> <li>• Desktop PC</li> <li>• Extra space for accessories</li> <li>• Adjustable keyboard height</li> <li>• Tall 40" version available</li> </ul> 	<ul style="list-style-type: none"> <li>• Mobile design</li> <li>• Touchscreen All-in-One PC</li> <li>• Electronic height-adjustable pressures and keyboard</li> <li>• Wireless printer</li> </ul> 	<ul style="list-style-type: none"> <li>• Transportable design</li> <li>• Adjustable height</li> <li>• Notebook PC</li> <li>• Wireless printer</li> <li>• Collapsible base version available</li> <li>• Custom carry cases available</li> </ul> 

### Additional Features:

- 12+ channels to display all clinically relevant data
- 4 direct pressures, expandable to 8
- Infused volume shown as a waveform for trending analysis
- Editable MS Word® report templates (used with optional MS Word software)
- Bladder and intake diary interpretive software
- Windows Vista® Business or XP® Pro operating system
- Backed by Life-Tech's 100% Uptime Guarantee and legendary 24/7 technical service

### Optional Features:

- Water, air-charged or solid-state catheters
- 1 or 2 uroflows
- 1 or 2 EMG channels, with or without audio
- UroPump
- Urethral pressure profilometer
- Wireless remote control (shown)
- Reports in image formats (pdf, jpeg, tif and more)
- Galen® clinical database
- AutoRead® scanned data input
- Voice dictation
- meridianEMR interface
- Video urodynamics
- Pelvic muscle rehabilitation
- Anorectal manometry
- Online technical service
- Cavernosometry
- DICOM PacsPrinter™



**Life-Tech, Inc.**

Life-Tech International, Inc

Stafford, Texas, USA  
 281-491-6600 800-231-9841  
 FAX: 281-491-7197  
 urosales@life-tech.com  
 www.life-tech.com